

Affiliated Practices Support Team

OPERATIONS



Bob Finuf
SVP – Payors & Value/ICS Exec Dir.
(913) 209-5153
bfinuf@cmnpcn.org

ASSISTANT:
Amanda Adams
aadams@cmnpcn.org
(816) 559-9378



Monica Jessick
Program Manager
(816) 652-2303
mjessick@cmnpcn.org

COMPLIANCE



Kim Brown
Vice President
Audit & Compliance
(816) 701-4570
kbrown@cmh.edu

ASSISTANT:
Gina Ferrara
gm Ferrara@cmh.edu
(816) 701-4581

INSURANCE



Kim Mattox
Legal Assistant & Insurance Program Manager
(816) 701-4512
kmattox@cmh.edu

ACCOUNTING



Kim Pearcy
Manager,
Accounting -- ICS
(816) 652-0457
kpearcy@cmnpcn.org

PROVIDER RELATIONS



Roxane Dill
Manager,
Population Health
Management
Network
(816) 553-4402
rdill@cmnpcn.org

LINE OF CREDIT



Dan Oberg
Director, Treasury
djoberg@cmh.edu
TreasuryNotifications@cmh.edu

PAYORS & VALUE



Jena Parker
Director, Payor Relations
(816) 601-3406
jbparker@cmh.edu



Jennifer Ralston
Provider Enrollment Manager
(816) 601-3994
jralston@cmh.edu



Adrienne Carr
Payor Contract Manager
alcarr@cmh.edu

HR/BENEFITS



Dawn Hoy
Manager, Benefits
(816) 601-4541
dmhoy@cmh.edu

Practice Admin Contact List

JOHNSON COUNTY PEDIATRICS (12/1/16)



Shelly Tehven
8800 W. 75th
Street, Suite 220
Overland Park, KS
66204

(913) 384-5500
stehven@jocopediatrics.com

PEDIATRIC CARE SPECIALISTS (3/1/17)



Connie Wilson
12541 Foster Street
Overland Park, KS
66213

(913) 906-0900
cjwilson@pedcarespecialists.com

PEDIATRIC ASSOCIATES (5/1/17)



Christy Cain
4400 Broadway,
Ste 206
Kansas City, MO
64111

+2 locations
(816) 561-8152
ccain@pedsassoc.com



Lauren Denny
4400 Broadway,
Ste 206
Kansas City, MO
64111

+2 locations
(816) 561-8152
ldenny@pedsassoc.com

PEDIATRIC CARE NORTH (5/22/17)



Jennifer Mueller
8781 N Platte
Purchase Dr,
Kansas City, MO
64155

(816) 587-3200
jmueller@pediatriccarenorth.com

CASS COUNTY PEDIATRICS & ADOLESCENTS (7/1/17)



Ann Gassman, MD
503 N Scott
Ave.
Belton, MO
64012

(816) 322-4769
agassman@casspeds.com



Radha Sarma, MD
503 N Scott
Ave.
Belton, MO
64012

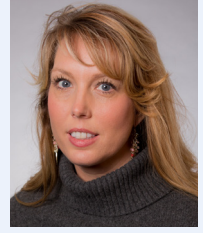
(816) 322-4769
asarma@casspeds.com



Allen (AJ) Gassman
503 N Scott Ave.
Belton, MO
64012

(816) 322-4769
allengassman@casspeds.com

PREFERRED PEDIATRICS (8/10/17)



Kelly McEntire
241 NW
McNary Ct.
Lee's Summit, MO
64086

(816) 347-0064
kelly.mac@prefpeds.com

REDWOOD PEDIATRICS (10/18/17)



Cameo Billharz
9151 NE 81st
Street, Ste. 240
Kansas City, MO
64158

+ 1 location
(816) 207-0070
admin@redwoodkids.com

CRADLE THRU COLLEGE CARE (12/16/17)



Joshua Magee
1004 Cardondelet,
Ste. 310
Kansas City, MO
64114

(816) 942-5437
josh@cradlethrucollege.com

SUMMIT PEDIATRICS AND ADOLESCENT MEDICINE (8/1/18)



Traci Dickey
3171 N.E.
Carnegie Drive
Lee's Summit,
MO 64064

(816) 875-1022
TDickey@summitdoctors.com

HEALTH CARE
FOR CHILDREN (7/1/19)



Garrett Hages

9051 NE 81st
Terrace #100
Kansas City, MO
64158

(816) 792-1170
Ext. 1006
manager@healthcareforchildrenkc.com

SHAWNEE MISSION
PEDIATRICS (7/1/19)



Kyla Pettey

7450 Kessler St.
Ste. 105
Merriam, KS 66204

(913) 396-6584
kpettey@shawnee-missionpediatrics.com

LEAWOOD PEDIATRICS
(9/23/19)



**Shealyn
Lucansky**

5401 College
Blvd., Suite 101 KS
66211

(913) 825-3627
officemanager@leawoodpediatrics.com

COCKERELL & MCINTOSH
PEDIATRICS (7/1/20)



Bryan Wood

1203 S 7 Highway
Blue Springs, MO
64014

+2 locations
(816) 655-0125
bwood@cmpeds.com

COMMUNITY CHOICE
PEDIATRICS (8/10/20)



Jody Brown

1425 NW Blue
Parkway, Lee's
Summit, MO
64086

+2 locations
(816) 524-5600
JBrown@community-choiceped.com



Chad Fletcher

1425 NW Blue
Parkway, Lee's
Summit, MO
64086

+2 locations
(816) 524-5600
CFletcher@community-choiceped.com

PEACOCK PEDIATRICS
(7/1/22)



Korinda Wierzba

805 N 36th St,
Suite B, St Joseph,
MO 64506

+ 1 location
(816) 396-6026
korinda.peacockped@gmail.com

PEDIATRIC PARTNERS
(7/1/22)



Becky Harmon

7450 W. 135th
Street
Overland Park,
KS 66223

(913) 888-4567
bharmon@pediatricpartnerskc.com



Krista Wingate

2111 E. Kansas
City Rd Olathe,
KS 66061

(913) 382-4155
kwingate@pediatricpartnerskc.com

PREMIER PEDIATRICS
(3/1/23)

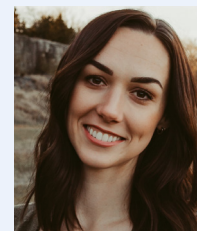


Dusti Thomas

8675 College
Boulevard, Ste. 100
Overland Park, KS
66210

(913) 345-9400
dthomas@premierforkids.com

WILDWOOD PEDIATRICS
(8/10/24)



**Alyssa
Palfreeman**

4025 Northeast
Lakewood Way
Ste. 100
Lee's Summit, MO
64064

(816) 287-8282
alyssa@wildwoodped.com

JC PEDS
(9/1/24)



Alisha Cline
1705 Christy Dr.
Ste 210
Jefferson City, MO
65101

(573) 606-7337
acline@jcpedsdoc.com

VILLAGE PEDIATRICS
(11/1/24)



Kelly Bolin
8340 Mission Road
#100
Prairie Village, KS
66208

(913) 642-2100
KBolin@village-pediatrics.com