

CM poster receives People's Choice Award at the 9th Annual Heartland Conference on Health Equity and Patient Centered Care

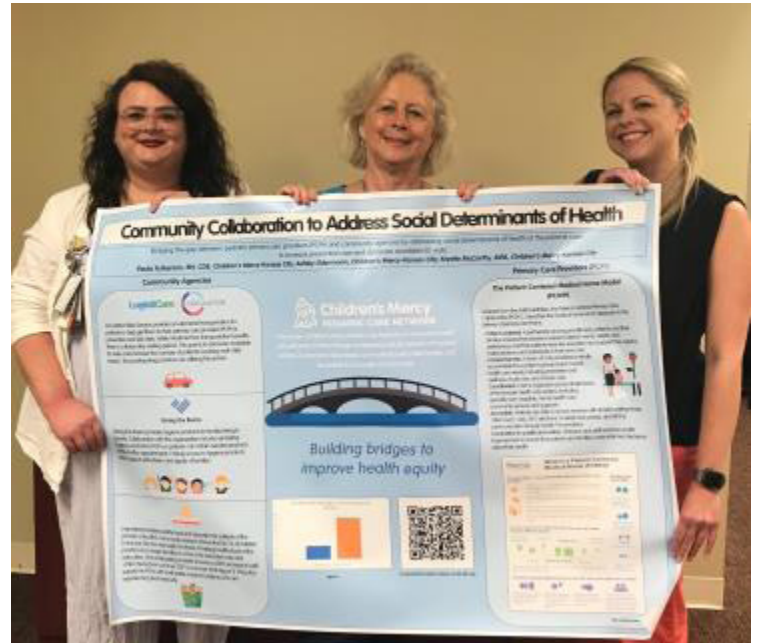
Paula Fulkerson, RN, BSN, CDE; Krystle McCarthy, MPA; and Ashley Odermann, BGS from Children's Mercy Integrated Care Solutions (ICS) presented a poster at the Heartland Conference on Health Equity and Patient Centered Care, which took place Aug. 6-7 in Overland Park, Kansas. That poster was selected for the People's Choice Award.

The conference seeks to highlight community-academic partnerships while encouraging open discussion among academic health centers, community health workers, faith-based community and community-based service organizations.

The title of their poster was "Community Collaboration to Address Social Determinants of Health" and discussed bridging the gap between pediatric primary care providers and community agencies by addressing the social determinants of health at the point of care.

The Children's Mercy Pediatric Care Network, which coordinates managed care to Children's Mercy Clinics and community pediatric practices, partners with community organizations to provide services at contracted patient-centered medical home practices. Three notable collaborations at a few practices are with Harvesters, Circulation and Giving the Basics. Harvesters provides healthy food at appointments, Circulation provides transportation to appointments and Giving the Basics provides hygiene products to support the self-esteem of patients and their families. These partnerships strive to increase preventive care while decreasing avoidable ED visits and addressing barriers to social determinants of health.

The group also acknowledges ICS Senior Communications Specialist Shawn Brant for his assistance with the poster.



Community Resource Specialist Ashley Odermann; Practice Facilitator Paula Fulkerson; and Practice Facilitation Specialist - PCN Krystle McCarthy - all from Integrated Care Solutions - presented a poster that won a People's Choice Award at the Heartland Conference on Health Equity and Patient Centered Care. The conference was Aug. 6-7 in Overland Park, Kansas.