



Children's  
Health  
Network

# Top Takeaways from the September 2019 CHN Committee Meeting

September CHN Committee Content Now Available On Demand – [Click Here](#) to View and Select Topic of Interest

## Updated CHN Overall 2019 Incentive Performance Report – Use to Inform Quality Improvement Efforts for Remainder of 2019!

[Click here](#) to review your practice's overall 2019 incentive performance!

Quality Performance Period:

- Aetna: April '18 to March '19
- Blue KC: April '18 to March '19
- Cigna: April '18 to March '19

- **Engagement:** Based on Engagement for CY2019
- **Clinical Quality:** 15 of 23 Practices Achieved 48+ Points Out of 60



**TIP:** Review the [CHN Quality Improvement Tool Kit](#) to review and access quality improvement strategies and insights for all CHN incentive measures!

## Quality Improvement Insights & Learnings – Learn How Your Practice Can Improve!

### Chlamydia Screening

- Pre-Visit Planning – Add Chlamydia Screening Standing Orders for Females on Contraceptives
- When Ordering Chlamydia Screening, Consider Stating that an Annual Chlamydia Screening is "Standard Clinical Practice (or Routine Screening)"
- Ongoing Education of Providers and Care Team Members
- Manage Test Process In-House by Ordering, Collecting Specimen, & Facilitating Test Completion

[Click to view](#) and share Chlamydia Screening Definition and Best Practice Slide Deck.

[Click here](#) to view your practice's HEDIS Chlamydia Screening performance change (March '18 to March '19).

The above tactics were updated based on insights shared during the September 25th CHN Committee meeting. Thank you for openly sharing your lessons learned and best practices!

## CHN's 2019 Clinical Integration Education Webinar is Now Available – Required Training for All Providers

[Click to view the Step-by-Step Guide](#) on how to access and complete the annual Children's Health Network Clinical Integration Training webinar. Below is an example of the email you received from CHN.

### 2019 Annual Children's Health Network training is now available!

This CHN Clinical Integration Education Module is required for ALL physicians and advanced practitioners who are members of the CHN. If you are receiving this email, you are required to complete this module by November 29, 2019.

The 2019 education module is a brief webinar on the national shift in how health care is being financed and delivered using value-based measurements that promote keeping children healthy! This webinar will help you understand what value-based care means, how it impacts care delivery and how you can help your practice transition and succeed within the CHN model!

The simplest way to access this training is to:

- Click your personalized link [here](#)
- This link belongs to you and cannot be shared with others. You will not need to sign into the portal for access.
- At the end of the module, you will be asked five short questions to acknowledge your understanding and completion of this training.

Please use the above link as it does not require CHN Portal access.

If you have any questions or concerns, please contact your provider relations representative:

- Morgan Berger: 816 701-5217 [mberger@cmpcn.org](mailto:mberger@cmpcn.org)
- Roxane Dill: 816 559-9368 [rdill@cmpcn.org](mailto:rdill@cmpcn.org)

If you have already completed this training there is no need for you to repeat it. Let your practice manager know so that we can stop future emails from being sent.

The 2019 Children's Health Network Clinical Integration Education module is a brief webinar on the transition to value based care and what it means to take downside risk. Downside risk is an important term that describes value based care models where networks assume some level of financial risk. This webinar will help you understand how the right strategy and operational approach in a downside risk model can provide an opportunity for greater financial incentives, and it will prepare all CHN providers for the transition to downside risk.

All staff are welcome to view the educational webinar but only physicians and advanced practitioners are required to complete the brief 15-minute webinar.

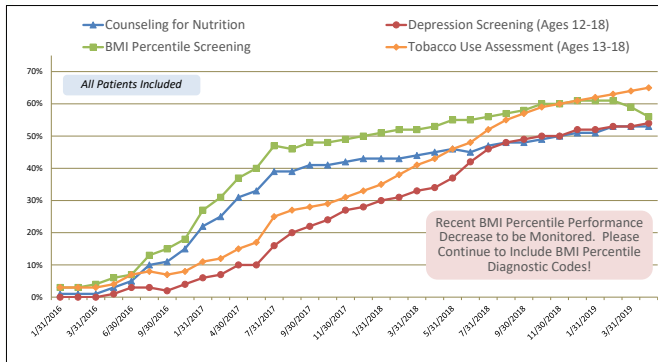
# CHN Trending Quality Performance Reflection: 4 Years of Improving Outcomes for Our Kids!

## Highlights from CIN Trending Quality Performance (All Patients Included)

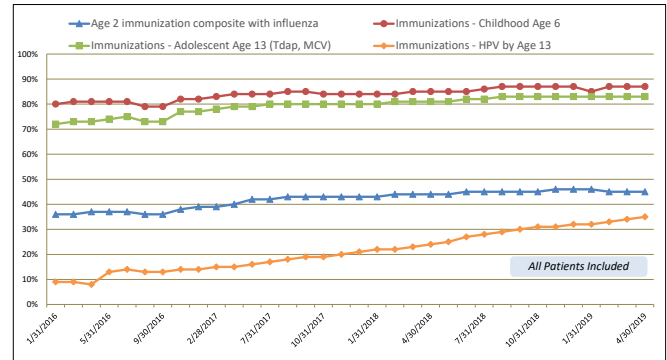
- Performance increases of 52-62% points across 4 screening measures
- Performance increases of 8-26% points across 4 immunization measures
- More than 300% increase in HPV Immunization since 2016!
- Adolescent and 3-6 Year Well Visit performance up 5-8% points
- 15 Month Well Visit (6+ Visits) performance up 19% points!
- Asthma 2+ Office Visits up 17% points

Great Work!

### Children's Health Network Trending Performance – CIN Quality Improvement (Screening Measures)



### Children's Health Network Trending Performance – CIN Quality Improvement (Immunization Measures)

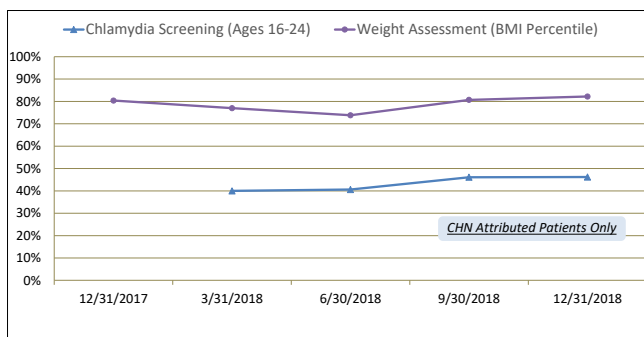


## Highlights from HEDIS Trending Quality Performance (CHN Attributed Patients)

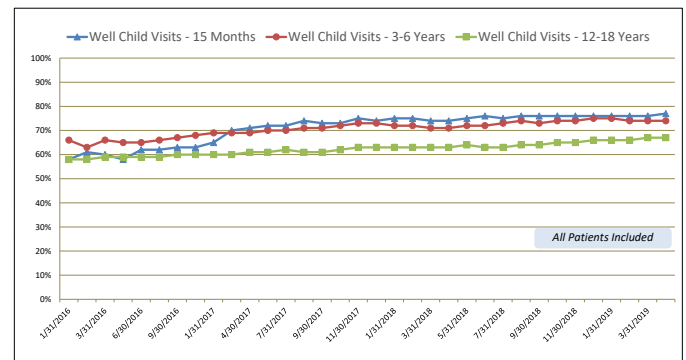
- Consistently high BMI Percentile Assessment (80%+)
- Chlamydia Screening increased by 6% points
- 10% points increase in HPV Immunization
- 15 Month Well Visit (6+ Visits) increased 4% points and above national 90th percentile (89%)
- 3-6 Year Well Visit increased 6% points and above national 90th percentile (88%)
- Adolescent Well Visit increased 5% points and above national 90th percentile (65%)
- Sustained performance of Appropriate Treatment of URI and Pharyngitis at 90th percentile (94-95%)
- Asthma Medication Management (i.e.  $\geq 75\%$  controller usage) increased 13% points

Thank You!

### Children's Health Network Trending Performance – HEDIS Quality Improvement (Screening Measures)



### Children's Health Network Trending Performance – CIN Quality Improvement (Well Visit Measures)



[Click here](#) to view CHN's trending performance in CIN and HEDIS measures!

[Click to Access Prior Monthly CHN Committee Takeaways](#)

Questions or Comments? Please ask your Children's Health Network committee member representative or contact Children's Health Network staff at [ProviderRelations@cmpcn.org](mailto:ProviderRelations@cmpcn.org).