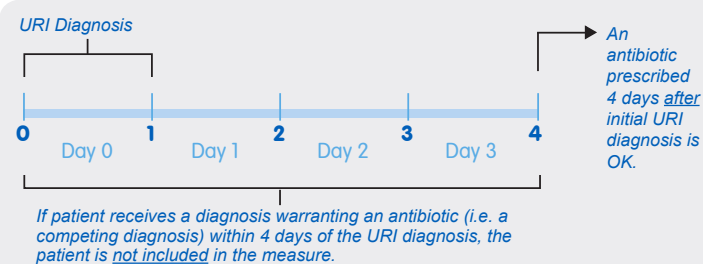


Inappropriate Treatment for Upper Respiratory Infection – What Providers Need to Know!

Performing well on the “Appropriate Treatment for Children with Upper Respiratory Infection” measure starts with CHN providers understanding how the measure is defined.

[Click here](#) to view a URI Measure Provider Quick Reference.



What is measured? Children 3 months to 18 years of age diagnosed with Upper Respiratory Infection (URI) should not be dispensed an antibiotic within 4 days of the URI diagnosis.

Why is this measure important? All payers (Blue KC, Cigna, Aetna) have required this measure be included in CHN value based agreements.

Lesson Learned: If ordering a strep test on a patient, be sure to also include pharyngitis diagnosis to ensure patient exclusion if strep test comes back positive!

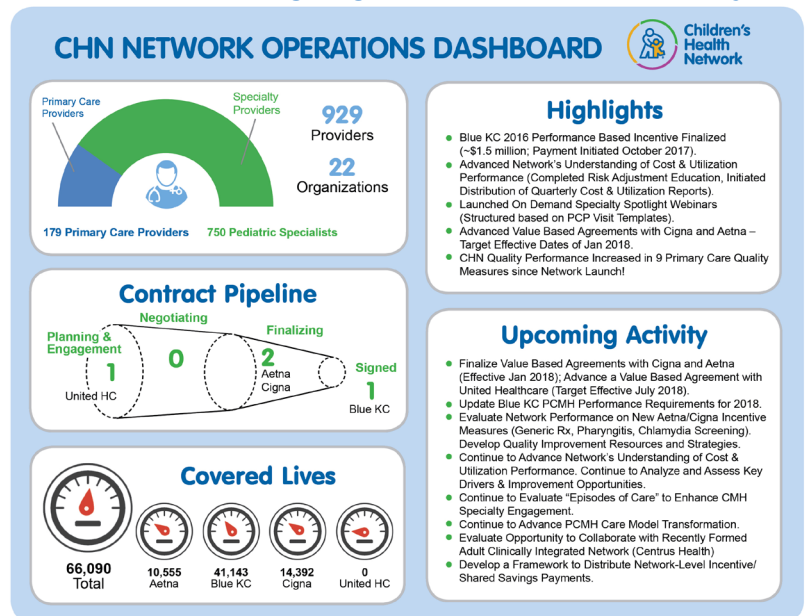
Checklist of Remaining Blue KC Actions to be Completed by End of 2017

- 1 Continue your practice's efforts to improve quality for Blue KC's 2017 performance based incentive ([See October Key Takeaways](#))
- 2 Complete work related to Blue KC Patient Centered Medical Home incentive measures (3 Documented Population Health Quality Improvement Meetings, 3 Documented Patient Care Plans, 2 Closed-Loop Specialty Referrals)
- 3 Complete Patient Experience Surveys for All Your Providers (30 Per Year Per Physician)

Items 2 and 3 are well underway and complete for many practices. Contact your practice manager for additional information.

CHN Network Operations Dashboard – Check out our accomplishments and upcoming activity for 2018!

CHN Physician Operating Board Approves Cigna and Aetna Shared Savings Agreements Effective January 2018!



Quarterly CHN Clinical Integration Quality and Engagement Report

[Click here](#) to view CHN's Quarterly Clinical Integration Quality and Engagement Report (performance based on measurement period from August 2016 through July 2017).

Our Network Improved 2% Points in HPV Vaccination by 13 Years Old (a 13% increase)! We Continue to Improve in BMI Percentile Screening (Up 11% Points), Tobacco Screening (Up 11% Points), and Depression Screening (Up 7% Points) Due to Coding.

[Click to Access Prior Monthly CHN Committee Takeaways](#)

Questions or Comments? Please ask your Children's Health Network committee member representative or contact Children's Health Network staff at ProviderRelations@cmpcn.org.